

BOAT HOUSE BULLETIN®

A FACTUAL REPORT FROM MERCURY MARINE



RX2070 CC
115 HP

BOAT SPECIFICATIONS

| | | | |
|--------------------|----------|-----------------------------|--------------|
| Bottom Style/Paint | N/A | Max. HP Capacity | 115 |
| Material | Aluminum | Fuel Tank Capacity | 20 gal |
| Length | 20' | Steering Type | Manual cable |
| Beam | 96" | Dry Boat Weight (published) | 1110 |
| Transom Height | 20" | X-Dimension (MCI) | N/A |
| Transom Angle | N/A | Mounting Bolt Hole (OB) | 3 |
| Deadrise Angle | N/A | | |

TEST CONDITIONS

| | | | | | |
|---------------------------|-----------|-----------|-----------|----------|----------|
| Test Date | 7/25/2011 | RPM RANGE | SPEED MPH | FUEL GPH | FUEL MPG |
| Test Conductors | Mercury | | | | |
| Boat Weight as Tested | 1110 | 1000 | 4.7 | 0.5 | 9.4 |
| Load (People & Gear lbs.) | 200 | 2000 | 8.2 | 1.5 | 5.47 |
| Air Temperature | 98 | 3000 | 23.5 | 3.3 | 7.12 |
| Elevation (ft)_ | 915 | 4000 | 31.8 | 5.7 | 5.58 |
| Wind Velocity (MPH) | 5 | 5000 | 41.2 | 10.1 | 4.08 |
| Fresh/Salt H2O | Fresh | WOT 5700 | 43.7 | 10.7 | 4.08 |
| Fuel Level Testing (gal) | 20 | | | | |

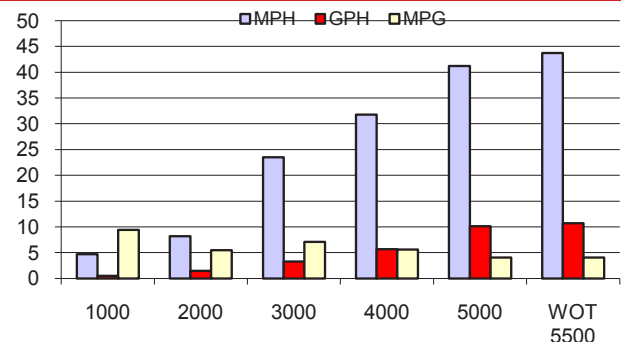
PERFORMANCE DATA

ENGINE SPECIFICATIONS

| | | | |
|----------------------------|--------------------|----------------------------|-------------|
| Engine | 115 Optimax Pro XS | PERFORMANCE SUMMARY | |
| Horsepower | 115 | Top Speed | 43.7 @ 5500 |
| Cylinders | 3 (in-line) | Acceleration 0 - 20 (sec) | 5 |
| Gear Ratio | 2.07 | Acceleration 0 - 30 (sec) | 8 |
| Model Number | N/A | PERFORMANCE CURVE | |
| Engine Installation Height | 1.5" | | |

PROPELLOR SPECIFICATIONS

| | | | |
|------------------|-----------------|--|--|
| Part Number | | | |
| Mercury Name | Laser II | | |
| Propellor Pitch | 21 P | | |
| Number of Blades | 3 | | |
| Material | Stainless Steel | | |



LOWE BOATS • 2000 INDUSTRIAL DRIVE • LEBANON, MO 65536 • 417-582-9101 • LOWE.COM

MERCURY MARINE • W6250 PIONEER RD. • FOND DU LAC, WI 54935 • 800-MERCURY • MERCURYMARINE.COM