

# BOAT HOUSE BULLETIN®

A FACTUAL REPORT FROM MERCURY MARINE



*RX2070 sk*  
**115 HP**

## BOAT SPECIFICATIONS

Bottom Style/Paint	N/A	Max. HP Capacity	115
Material	Aluminum	Fuel Tank Capacity	20 gal
Length	20'	Steering Type	Manual cable
Beam	96"	Dry Boat Weight (published)	1110
Transom Height	20"	X-Dimension (MCI)	N/A
Transom Angle	N/A	Mounting Bolt Hole (OB)	3
Deadrise Angle	N/A		

## TEST CONDITIONS

Test Date	7/25/2011
Test Conductors	Mercury
Boat Weight as Tested	1125
Load (People & Gear lbs.)	375
Air Temperature	98
Elevation (ft)_	915
Wind Velocity (MPH)	5
Fresh/Salt H2O	Fresh
Fuel Level Testing (gal)	15

## PERFORMANCE DATA

RPM RANGE	SPEED MPH	FUEL GPH	FUEL MPG
1000	4.5	0.4	11.3
2000	9.8	1.4	7
3000	22	3.4	6.47
4000	30.7	5.8	5.29
5000	39	9.4	4.15
WOT 5700	43.5	10.3	4.22

## ENGINE SPECIFICATIONS

Engine	115 Optimax Pro XS
Horsepower	115
Cylinders	3 (in-line)
Gear Ratio	2.07
Model Number	N/A
Engine Installation Height	1.5"

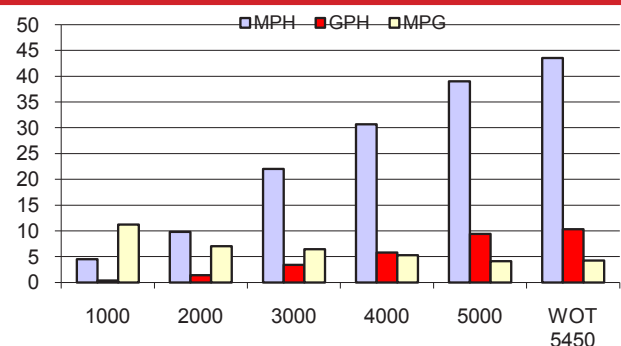
## PERFORMANCE SUMMARY

Top Speed	43.5 @ 5450
Acceleration 0 - 20 (sec)	5
Acceleration 0 - 30 (sec)	7

## PROPELLOR SPECIFICATIONS

Part Number	
Mercury Name	Black Max
Propellor Pitch	19 P
Number of Blades	3
Material	Aluminum

## PERFORMANCE CURVE



**LOWE BOATS** • 2000 INDUSTRIAL DRIVE • LEBANON, MO 65536 • 417-582-9101 • [LOWE.COM](http://LOWE.COM)

**MERCURY MARINE** • W6250 PIONEER RD. • FOND DU LAC, WI 54935 • 800-MERCURY • [MERCURYMARINE.COM](http://MERCURYMARINE.COM)

© 2011 Mercury Marine, All Rights Reserved. Results on individual boats may vary depending on many factors, including weather, and the condition of the propeller, lower unit and boat bottom.