

BOAT HOUSE BULLETIN®

A FACTUAL REPORT FROM MERCURY MARINE



RX2070 75 HP

BOAT SPECIFICATIONS

Bottom Style/Paint	N/A	Max. HP Capacity	75
Material	Aluminum	Fuel Tank Capacity	6 gal. portable
Length	20'	Steering Type	Tiller Handle
Beam	96"	Dry Boat Weight (published)	710
Transom Height	20"	X-Dimension (MCI)	N/A
Transom Angle	N/A	Mounting Bolt Hole (OB)	1
Deadrise Angle	N/A		

TEST CONDITIONS

Test Date	5/16/2011	RPM RANGE	SPEED MPH	FUEL GPH	FUEL MPG
Test Conductors	Mercury				
Boat Weight as Tested	710	1000	3.2	0.3	10.7
Load (People & Gear lbs.)	200	2000	5.7	1	5.7
Air Temperature	85	3000	14	2	7
Elevation (ft)	660	4000	29.3	3.5	8.37
Wind Velocity (MPH)	5	5000	36.6	5.7	6.42
Fresh/Salt H2O	Fresh	WOT 5700	41	6.5	6.31
Fuel Level Testing (gal)	5				

PERFORMANCE DATA

ENGINE SPECIFICATIONS

Engine	75 Optimax
Horsepower	75
Cylinders	3 (in-line)
Gear Ratio	2.33
Model Number	N/A
Engine Installation Height	1.5"

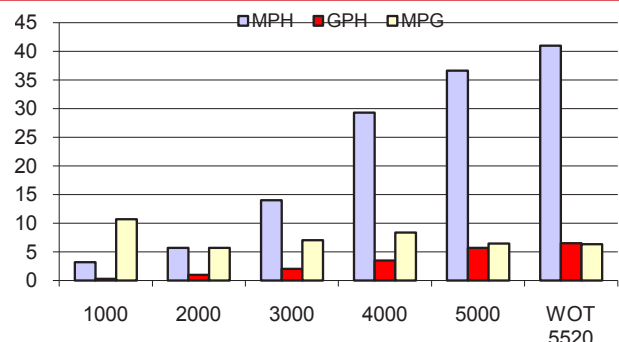
PERFORMANCE SUMMARY

Top Speed	41 @ 552
Acceleration 0 - 20 (sec)	4
Acceleration 0 - 30 (sec)	6

PROPELLOR SPECIFICATIONS

Part Number	
Mercury Name	Laser II
Propellor Pitch	19 P
Number of Blades	3
Material	Stainless Steel

PERFORMANCE CURVE



LOWE BOATS • 2000 INDUSTRIAL DRIVE • LEBANON, MO 65536 • 417-582-9101 • LOWE.COM

MERCURY MARINE • W6250 PIONEER RD. • FOND DU LAC, WI 54935 • 800-MERCURY • MERCURYMARINE.COM