

BOAT HOUSE BULLETIN®

A FACTUAL REPORT FROM MERCURY MARINE

MERCURY
#1 On The Water™



SS210
115 HP

BOAT SPECIFICATIONS

Bottom Style/Paint	N/A	Max. HP Capacity	115
Material	Aluminum	Fuel Tank Capacity	24 gal
Length	19' 8"	Steering Type	Manual cable
Beam	8' 6"	Dry Boat Weight (published)	1680
Transom Height	N/A	X-Dimension (MCI)	N/A
Transom Angle	N/A	Mounting Bolt Hole (OB)	1
Deadrise Angle	N/A		

TEST CONDITIONS

Test Date	7/25/2011
Test Conductors	Mercury
Boat Weight as Tested	1680
Load (People & Gear lbs.)	225
Air Temperature	98
Elevation (ft)_	915
Wind Velocity (MPH)	5
Fresh/Salt H2O	Fresh
Fuel Level Testing (gal)	24

PERFORMANCE DATA

RPM RANGE	SPEED MPH	FUEL GPH	FUEL MPG
1000	4	0.3	13.3
2000	7.8	1.3	6
3000	17	3.6	4.72
4000	25.3	6	4.22
5000	35.1	8.4	4.18
WOT 5700	39.8	10.5	3.79

ENGINE SPECIFICATIONS

Engine	115 Optimax Pro XS
Horsepower	115
Cylinders	3 (in-line)
Gear Ratio	2.07
Model Number	N/A
Engine Installation Height	1.5"

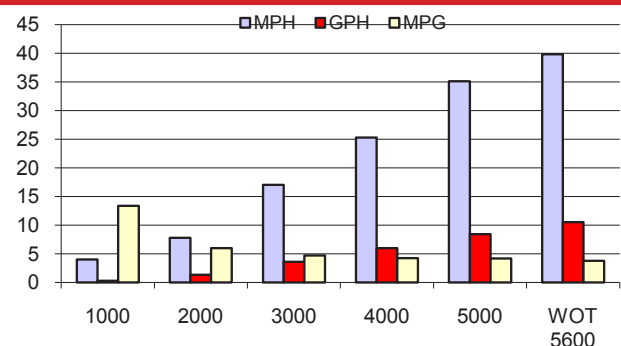
PERFORMANCE SUMMARY

Top Speed	39.8 @ 5600
Acceleration 0 - 20 (sec)	6
Acceleration 0 - 30 (sec)	10

PROPELLOR SPECIFICATIONS

Part Number	
Mercury Name	Black Max
Propellor Pitch	17 P
Number of Blades	3
Material	Aluminum

PERFORMANCE CURVE



LOWE BOATS • 2000 INDUSTRIAL DRIVE • LEBANON, MO 65536 • 417-582-9101 • LOWE.COM

MERCURY MARINE • W6250 PIONEER RD. • FOND DU LAC, WI 54935 • 800-MERCURY • MERCURYMARINE.COM

© 2011 Mercury Marine, All Rights Reserved. Results on individual boats may vary depending on many factors, including weather, and the condition of the propeller, lower unit and boat bottom.